

# Optimizing Methane Capture



**Location:** Vancouver Landfill

**Tools:** smartWells, Apis Cloud dashboard

**Installation:** 50 Apis devices, installation completed in December 2022.

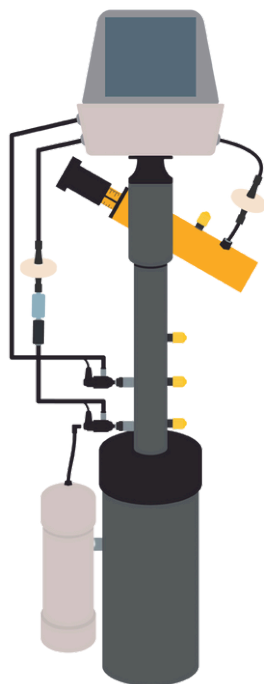
**Objective:** Contribute to an emissions reduction goal of 485,000 tonnes of CO<sub>2</sub> over 10 years.

Vancouver,  
Canada



## Reducing Emissions with Apis Technology

Vancouver Landfill has been expanding its gas-capture system to meet provincial targets. With 50% funding from the province, Vancouver Landfill installed 50 Apis smartWells to support this initiative. This led to a 12% increase in methane flow and a reduction of 17,445 tonnes of greenhouse gas emissions over one year. Reducing methane emissions is critical, as landfills contribute [19%](#) of Canada's total human-related methane emissions.



### How Apis Works

Apis smartWells optimize landfill gas collection by improving methane capture through automated monitoring and adjustments. Installed directly on gas wells, these devices boost gas flow and improve gas quality. Data collected by Apis devices is transmitted to our dashboard, offering real-time insights into gas quality, pressure, and temperature, empowering users to maintain optimal performance.

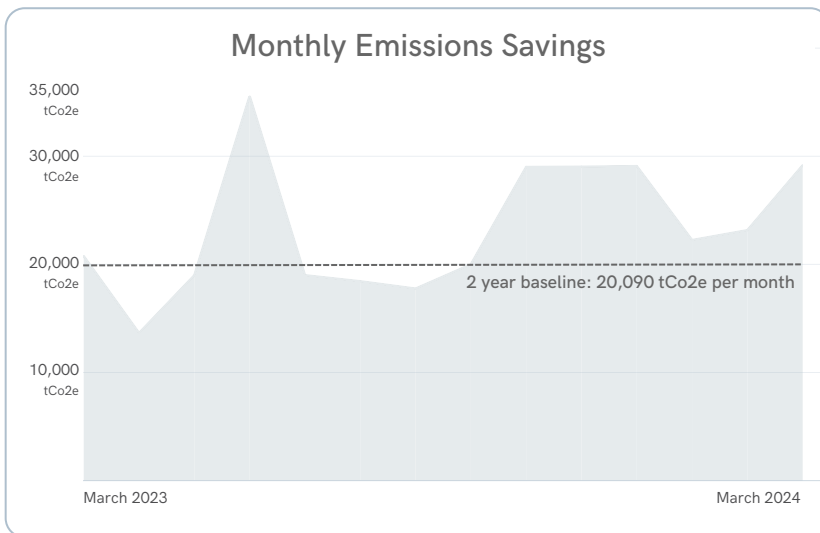
### Key Benefits

- Maximize landfill gas collection
- Quickly detect gas field issues
- Data driven well field operations

## Post-Installation Performance

To evaluate the impact of Apis devices, we first established a baseline with two years of historical methane flow data. After installation, we collected data from wells with Apis devices installed and compared it to the baseline to assess improvements in methane capture and emissions reductions.

### Emissions Savings from Apis Devices



The chart illustrates the average two-year baseline emissions, with any values above the dotted line representing additional emissions savings achieved through the 50 Apis devices.

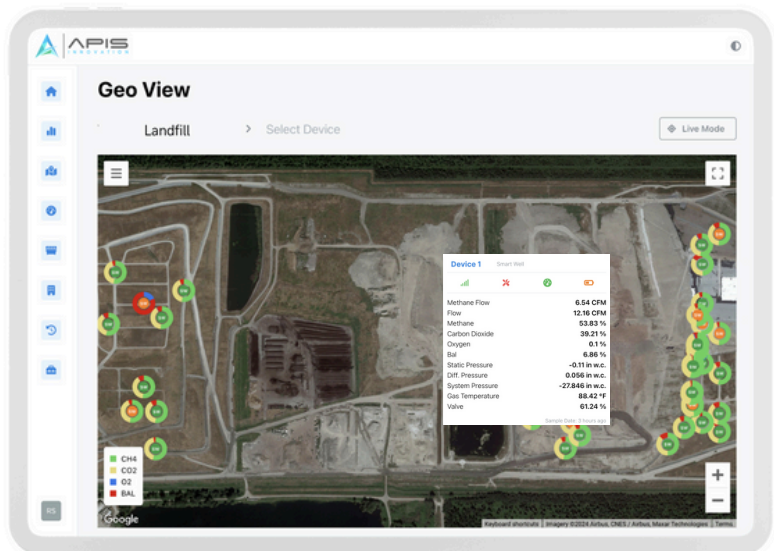
Increase in Methane Flow:

**+12%**

The integration of the 50 Apis smartWell devices at Vancouver Landfill has boosted methane capture by 12% and reduced emissions by over 17,000 tonnes over the one year period.

### Apis Cloud in Action

Our dashboard empowers landfill operators to optimize gas capture by providing real-time insights and actionable data. With tools like GeoView for wellfield overviews (see image), DataView for historical trend analysis, and automated alerts for exceedances, sites can quickly pinpoint issues, monitor gas quality, and track well performance.



*Learn more about how Apis is transforming landfill management by visiting our website or contacting us today!*